

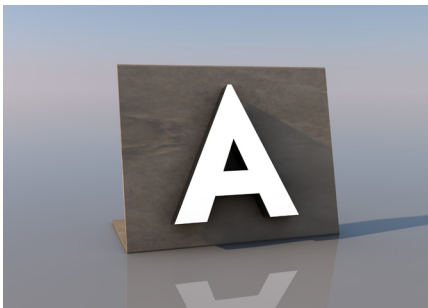
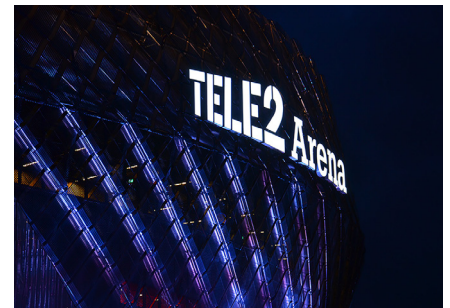
# Contrasta LED



FOCUSNEO



Our Contrasta range lights up through the front of the logotype and has a very good readability at both short and long distances.



## CHARACTERISTICS

- » Crisp day & night effect
- » True to logotype in color & shape
- » Suitable for logotypes in strong & clear colors
- » Translucent acrylic front
- » Coated opaque side

## MANUFACTURING

The letter body is made of aluminum. To give the letter a durable surface layer, the letter is painted with a water-based car paint. The inside of the letter is painted white to give the letter a maximum backlight. The front is made of 3 mm acrylic glass in the desired color, or as an alternative, in white acrylic with a colored foil.

## LIGHTING

All our LED signs are equipped with top quality LEDs. We can offer two different alternatives of lighting in the signs. The first alternative is high-quality LEDs mounted on a chain, where they are manually adapted for even and strong lighting. The second is our unique solution, where a computer calculates the amount and location of separate LEDs, and places them in the letter. This alternative gives the letters a very accurate illumination and even the thinnest and most pointy part of a logotype can be highlighted.

## MOUNTING

Letters are mounted either with a pin spaced from the facade or on a frame painted in the facade color. Cables are installed in a cable list or in the frame. Transformers are conveniently placed indoors, or in IP-rated boxes on the facade that are painted as the color of the facade.

## GENERAL INFORMATION ABOUT OUR LED SIGNS

- » Used primarily for larger texts to be viewed from longer distances (otherwise see LPFLEX™)
- » Powerful light
- » Long life
- » Low energy consumption
- » Environmentally friendly - no environmental hazards in the manufacturing or harmful residues at disposal